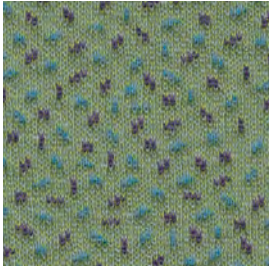
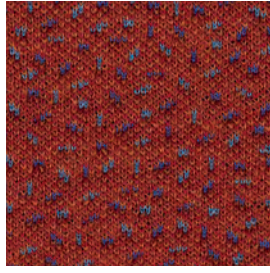


Sprinkles

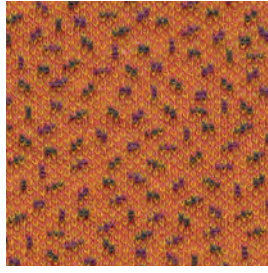
kvadrat febrik



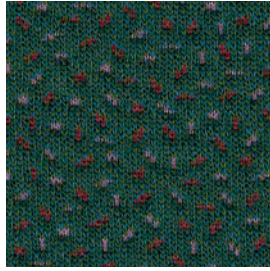
924



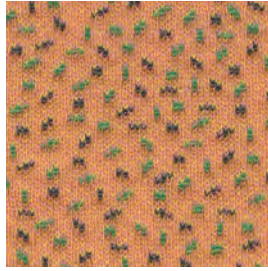
584



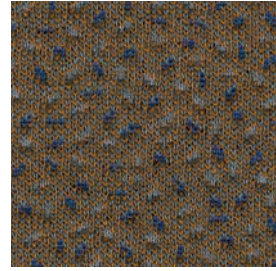
554



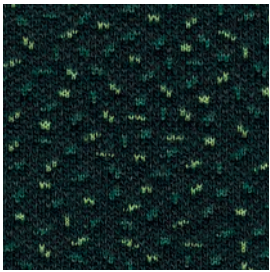
974



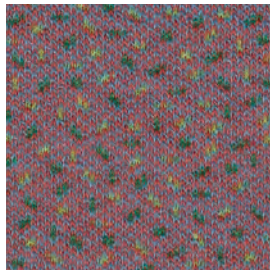
454



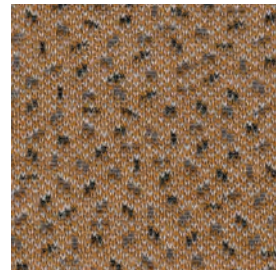
274



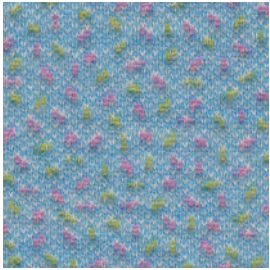
984



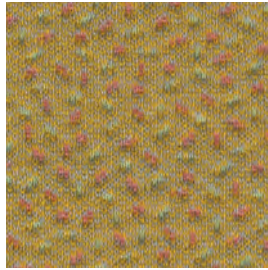
654



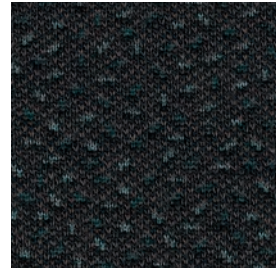
254



714

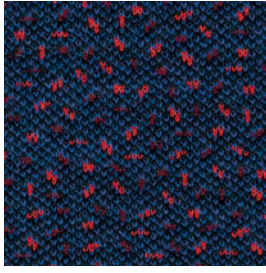


424

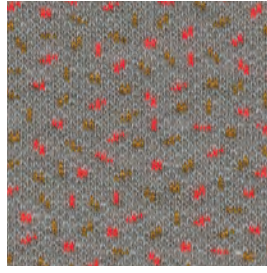


294

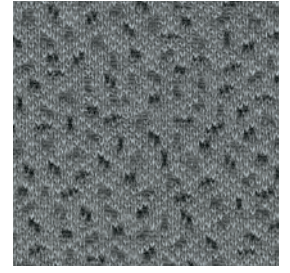
Sprinkles



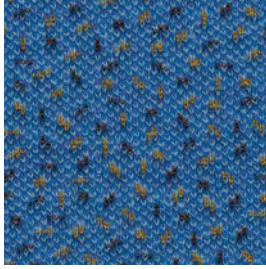
784



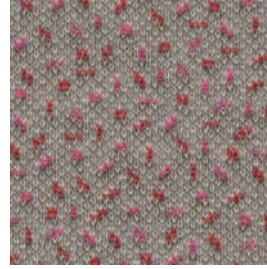
124



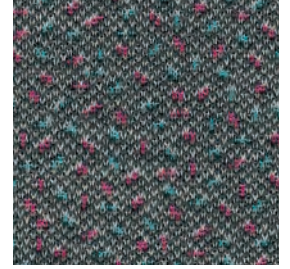
134



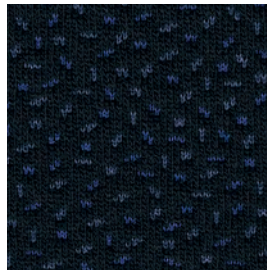
754



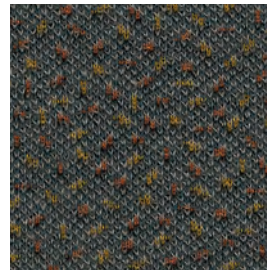
114



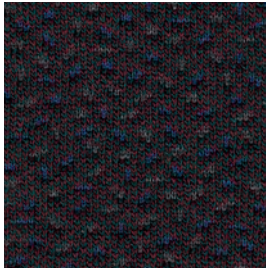
154



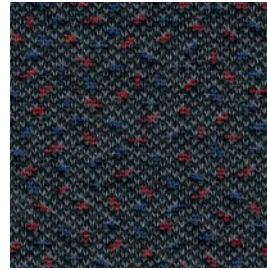
794



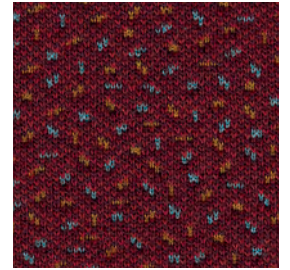
174



694



184



684

Sprinkles

Designed by Bertjan Pot

DK

Anvendelse Møbelstof til privat som offentlig indretning.

Beskrivelse 30% ny uld, 10% nylon, 20% polyester, 40% polyester fyld. Bredde ca. 160 cm. Vægt ca. 1070 g/lbm. Garnfarvet. I lyse farver kan fremmede fibre forekomme. Nuanceforskelle kan forekomme.

Ægkant ↔

Slidstyrke: Ca. 80.000 slidbevægelser efter Martindale metoden EN ISO 12947. **Lysægted** (ISO) 7. **Pilling** (EN ISO) 4. **Gnidægted** (ISO) tør 4-5, våd 4. **Flammesikring:** AS/NZS 3837. ASTM E84 Class A hæftet. BS 5852 Crib 5 med flammesikring. BS 5852 part 1. DIN 4102 B2. EN 1021-1/2. IMO FTP Code 2010:Part 8. UNI 9175 1IM. US Cal. Bull. 117-2013. (Kopi af testrapport kan rekvireres).

Vedligeholdelse Se ISO symboler. Desinfektion, se kvadrat.dk.

UK/US

Application Upholstery for both domestic and public decoration.

Description 30% new wool, 10% nylon, 20% polyester, 40% polyester filling. Width app. 63 inches (160 cm). Weight app. 1070 g/lin.m, 34.3 oz/ly. Yarn dyed. Foreign fibres may occur in light colours. Colour differences may occur.

Selvedge/Direction ↔

Abrasion: App. 80,000 rubs acc. to the Martindale method EN ISO 12947.

Lightfastness (ISO) 7. **Pilling** (EN ISO) 4.

Fastness to rubbing (ISO) dry 4-5, wet 4. **Flame resistance:** AS/NZS 3837. ASTM E84 Class A unadhered. BS 5852 Crib 5 with treatment. BS 5852 part 1. DIN 4102 B2. EN 1021-1/2. IMO FTP Code 2010:Part 8. UNI 9175 1IM. US Cal. Bull. 117-2013. (Copy of test report available).

Care Please see the ISO symbols. Disinfection, see kvadrat.dk.

DE

Anwendungsbereich Möbelstoff wohlgeeignet im sowohl privaten als öffentlichen Wohnbereich.

Beschreibung 30% Schurwolle, 10% Nylon, 20% Polyester, 40% Polyesterfüllung. Breite ca. 160 cm. Gewicht ca. 1070 g/m. Garngefärbt. In hellen Farben können Fremdfasern vorkommen. Farbunterschiede können vorkommen.

Webkant ↔

Scheuerfestigkeit: Ca. 80.000 Scheuerhübe nach der Martindale Methode EN ISO 12947.

Lichtechtheit (ISO) 7. **Pilling** (EN ISO) 4.

Reibechtheit (ISO) trocken 4-5, nass 4.

Flammenschutz: AS/NZS 3837. ASTM E84 Class A unverklebt. BS 5852 Crib 5 mit Ausrüstung. BS 5852 part 1. DIN 4102 B2. EN 1021-1/2. IMO FTP Code 2010:Part 8. UNI 9175 1IM. US Cal. Bull. 117-2013. (Testbericht verfügbar).

Pflege Siehe ISO Pflegesymbole. Desinfektion, siehe kvadrat.dk.

NL

Toepassing Toepasbaar zowel in particuliere woningen als voor projecten.

Omschrijving 30% scheerwol, 10% nylon, 20% polyester, 40% polyester vulling. Breedte ca. 160 cm. Gewicht ca. 1070 gr/str. m. Garengerfd. Afwijkende vezels kunnen voorkomen in lichte kleuren. Kleurverschillen kunnen optreden.

Zelfkant ↔

Slijtvastheid: Ca. 80.000 toeren Martindale EN ISO 12947. **Lichtechtheid** (ISO) 7. **Pilling** (EN ISO) 4. **Wrijftechtheid** (ISO) droge 4-5, natte 4.

Brandwerendheid: AS/NZS 3837. ASTM E84 Class A ongelijmd. BS 5852 Crib 5 met behandeling. BS 5852 part 1. DIN 4102 B2. EN 1021-1/2. IMO FTP Code 2010:Part 8. UNI 9175 1IM. US Cal. Bull. 117-2013. (Op aanvraag sturen wij u graag een kopie van het testrapport toe). **Onderhoud** Zie de ISO symbolen. Desinfectie, kvadrat.dk.

FR

Domaine d'utilisation Tissu d'ameublement pour aménagement privé et public.

Description 30% laine vierge, 10% nylon, 20% polyester, 40% garnissage polyester. Largeur env. 160 cm. Poids env. 1070 g/m lg. Teinture sur fil. Dans les couleurs claires, présence de fibres étrangères. Ecart des coloris possibles.

Lisière ↔

Résistance à l'abrasion: Env. 80.000 révolutions selon le procédé Martindale EN ISO 12947. **Résistance à la lumière** (ISO) 7.

Boulochage (EN ISO) 4. **Résistance au frottement** (ISO) sec 4-5, mouillé 4. **Normes au feu:** AS/NZS 3837. ASTM E84 Class A non collé. BS 5852 Crib 5 avec traitement. BS 5852 part 1. DIN 4102 B2. EN 1021-1/2. IMO FTP Code 2010:Part 8. UNI 9175 1IM. US Cal. Bull. 117-2013. (La copie du compte rendu des tests est disponible sur demande).

Entretien Voir les symboles ISO. Désinfection, voir kvadrat.dk.

IT

Destinazione d'uso Rivestimento per imbottiti, casa e contract.

Caratteristiche 30% lana vergine, 10% nylon, 20% poliestere, 40% imbottitura poliestere. Altezza circa 160 cm. Peso circa 1070 gr/mtl. Tinto in filo. Nei colori chiari possono essere presenti fibre di tonalità scure. Possibili differenze per colore.

Cimosa ↔

Abrasion: Circa 80.000 cicli/metodo Martindale EN ISO 12947. **Resistenza alla luce** (ISO) 7. **Pilling** (EN ISO) 4. **Resistenza allo sfregamento** (ISO) condizione a secco 4-5, condizione umido 4. **Ignifugazione:** AS/NZS 3837. ASTM E84 Class A non incollato. BS 5852 Crib 5 trattato ignifugo. BS 5852 part 1. DIN 4102 B2. EN 1021-1/2. IMO FTP Code 2010:Part 8. UNI 9175 1IM. US Cal. Bull. 117-2013. (Disponibile copia del test).

Manutenzione Per favore seguire simboli ISO. Per disinfettare, vedi il sito kvadrat.dk.

ES

Aplicación Tapicería para hogares e instituciones.

Descripción 30% lana virgen, 10% nilón, 20% poliéster, 40% relleno de poliéster. Anchura aprox. 160 cm. Peso aprox. 440 gr/ml. Peso aprox. 1070 gr/ml. Hilo teñido. En los colores claros puede haber fibras de otro color. Posibles variaciones de color.

Filo ↔

Resistencia al desgaste: Aprox. 80.000 ciclos según el método Martindale EN ISO 12947.

Resistencia a la luz (ISO) 7. **Relleno** (EN ISO) 4.

Solidez al frotamiento (ISO) seco 4-5, mojado 4. **Resistencia al fuego:** AS/NZS 3837. ASTM E84 Class A sin pegar. BS 5852 Crib 5 con tratamiento. BS 5852 part 1. DIN 4102 B2. EN 1021-1/2. IMO FTP Code 2010:Part 8. UNI 9175 1IM. US Cal. Bull. 117-2013. (Copia del informe de ensayos disponible).

Mantenimiento Consulte los símbolos ISO. Desinfección, visita kvadrat.dk.

JP

用途 住宅あるいは公共のインテリア、家具用テキスタイル。

詳細 30% ニューウール、10% ナイロン、20% ポリエステル、40% 中素材ポリエステル。幅：160 cm。重量：1m あたり約 1070 g。糸染め。明色の場合異質繊維が混在する場合あり。色彩ニューアンスに多少の違いが生じる可能性あり。

耳、ふち、 ↔

テスト:

磨耗: マーチンデール法により摩擦運動約 80,000 回。EN ISO 12947. **色あせ保障:** (ISO) 7. **ピリング** (EN ISO) 4. **摩擦保証:** (ISO) 乾燥状態 4-5、濡れた状態 4. **耐炎性:** AS/NZS 3837. ASTM E84 Class A unadhered. 特殊耐炎処理を行うことにより、BS 5852 Crib 5 に到達可能。BS 5852 part 1. DIN 4102 B2. EN 1021-1/2. IMO FTP Code 2010:Part 8. UNI 9175 1IM. US Cal. Bull. 117-2013. (テストレポートのコピー入手可能。)

手入れ

ISO シンボル参照。消毒について?kvadrat.dkまで参照ください。

CN

适用范围 家居和公共空间软包面料。

成分 30% 新羊毛, 10% 尼龙, 20% 涤纶, 40% 聚酯填充物。幅宽约63英寸(160cm)。重量约1070克/延米。纱染色面料。匹染色面料。颜色可能稍有色差。

图纹方向 ↔

马丁代尔法约80,000转。EN ISO 12947. **光照色牢度** (ISO) 7. **起毛起球** (EN ISO) 4. **摩擦色牢度** (ISO) 干燥4-5, 湿4. **阻燃性:** AS/NZS 3837, ASTM E84 Class A unadhered. 特别耐火处理时BS 5852 Crib 5 可以满足。BS 5852 part 1. DIN 4102 B2. EN 1021-1/2. IMO FTP Code 2010:Part 8. UNI 9175 1IM. US Cal. Bull. 117-2013. (可提供测试报告副本)。

维护 请参照ISO标志。消毒请参阅kvadrat.dk。



Quality and environmental system accreditation according to ISO 9001 and ISO 14001.

*ACT® Registered Certification Marks

Contact and further information www.kvadrat.dk

5 year warranty



US contact info: 1-800-620-9309